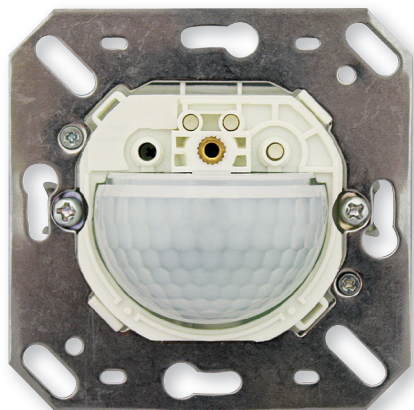
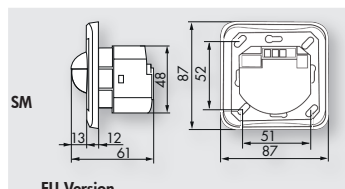


Indoor 180-KNX



EU-Version



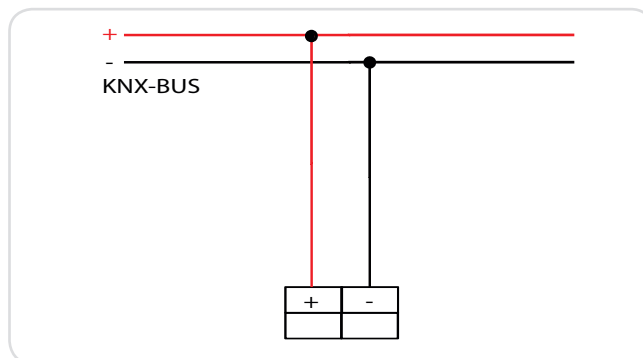
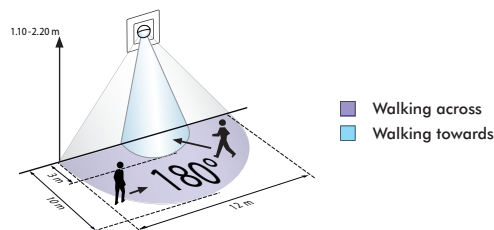
EU-Version

PRODUCT INFORMATION

- KNX wall occupancy detector with integrated KNX bus connector
- When using the application **B.E.G. Occupancy detector_928XX_V5.0**, several operation modes are available:
 1. Automatic or semi-automatic mode with daylight-depending constant light control or switching output
 2. Slave mode
- Up to three additional switching channels – selectively either daylight-depending or not
- Threshold values and follow-up times can be changed for all channels using communication objects
- Burn-in function with adjustable burn-in time from 1 to 100 hours
- With activatable motion LED, deactivatable via ETS parameter, communication object or remote control
- For use with faceplate (interior cover dimensions 50x50mm) in 5 different colours

TECHNICAL DATA

- ⚡ 24V(DC) from KNX-BUS-network V DC
- 🌀 180°
- 📏 max. Ø 10 m
- ⚠ Mounting height max. 2.2m
- 📦 IP20 / Class II
- 🌡 -25 °C to +55 °C
- 🏠 Housing UV- and shock resistant polycarbonate
- 📶 IR-PD-KNX
- KNX**
- 📶 **For integration in KNX-BUS systems**



Description	Colour	Part number
Indoor 180-KNX-FM, covering not included	-	92892
Accessory (optional)		
SM-Socket for Indoor 180	pure white, RAL 9010	92141
Protection against vandalism for Indoor 180	-	92018
Centre plate for modular push button (angled corners)	white	35126
Centre plate for modular push button (rounded corners)	white	35127
Covering IP20	pure white, RAL 9010	92630
Covering IP20	creme white, RAL 1013	92632
Covering IP20	steel, RAL 9006	92633
Covering IP20	anthracite, RAL 7021	92634
Covering IP20	traffic white, RAL 9016	92641
Covering IP54	pure white, RAL 9010	92139